



iMac

Operation Guide for First-time Users

STEP 1

1

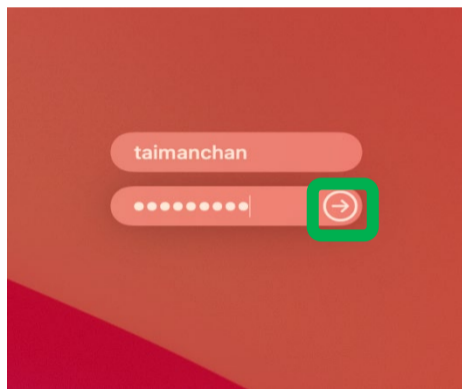
- Switch on the iMac by pressing the **Power button** near the bottom left corner at the back of the panel



STEP 2

2

- Sign in the computer with your **Lingnan ID** and **password**
- Press **“Enter”** or click the arrow

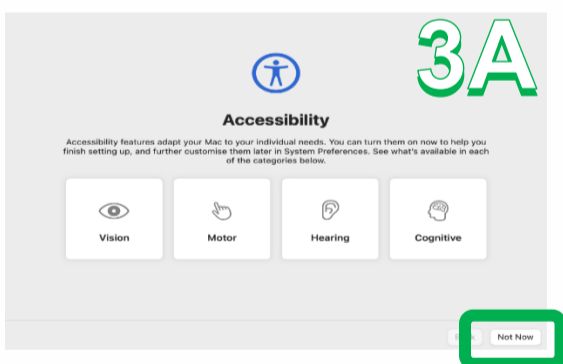


Settings are needed for First-time Users

The followings are the quick steps for reference only. You may set up the profile according to your preference.

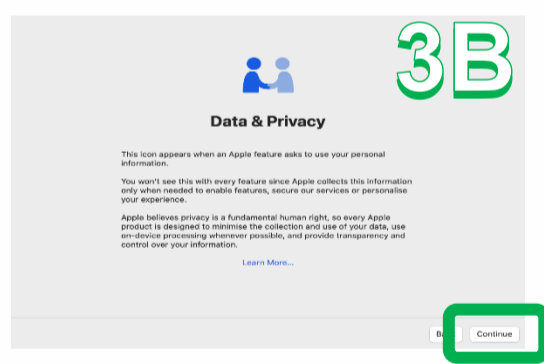
STEP 3

3



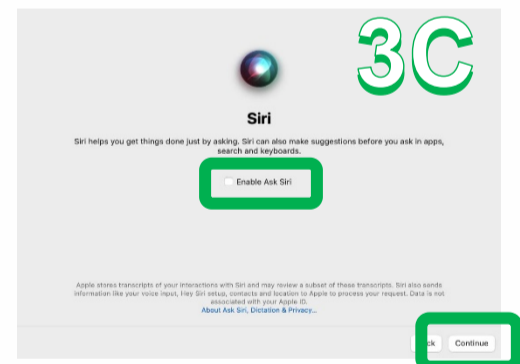
3A: Accessibility

- Click **“Not Now”**



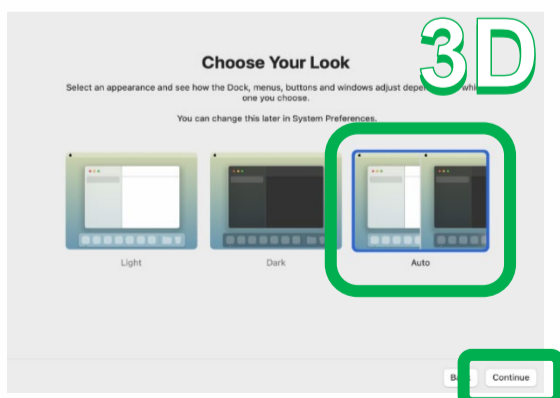
3B: Data & Privacy

- Click **“Continue”**



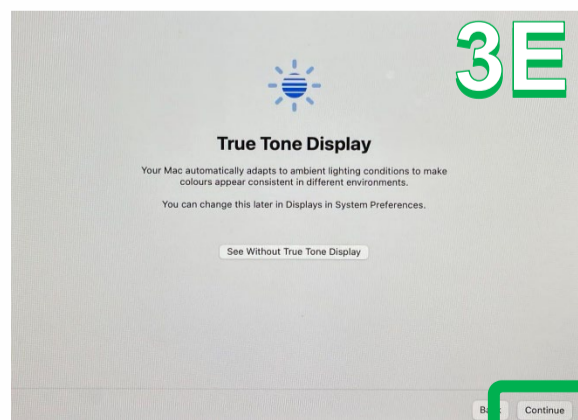
3C: Siri

- Uncheck **“Enable Ask Siri”** and click **“Continue”**



3D: Choose Your Look

- Choose **“Auto”** and click **“Continue”**



3E: True Tone Display

- Click **“Continue”**

