



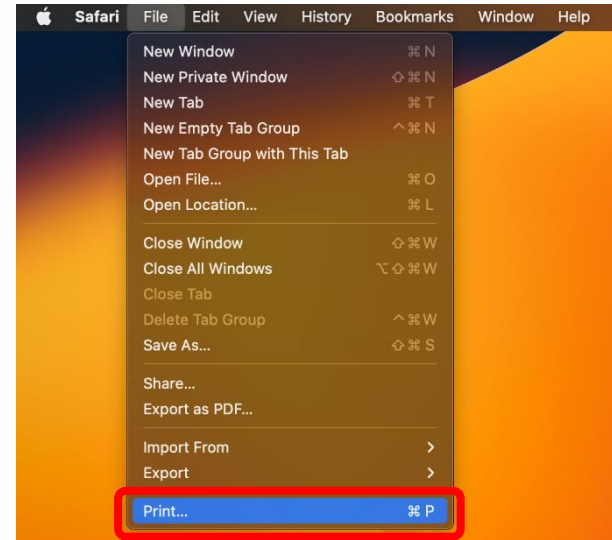
iMac

Operation Guide for Printing

1

STEP

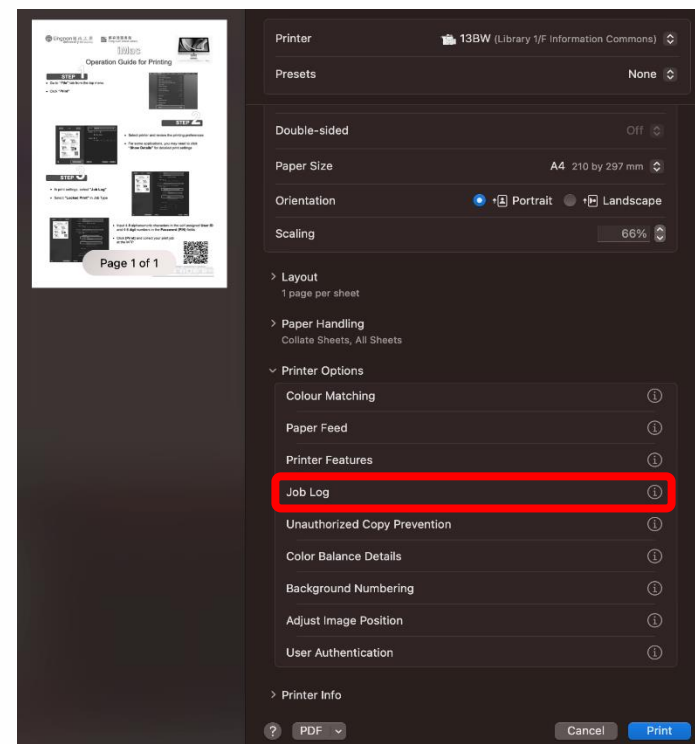
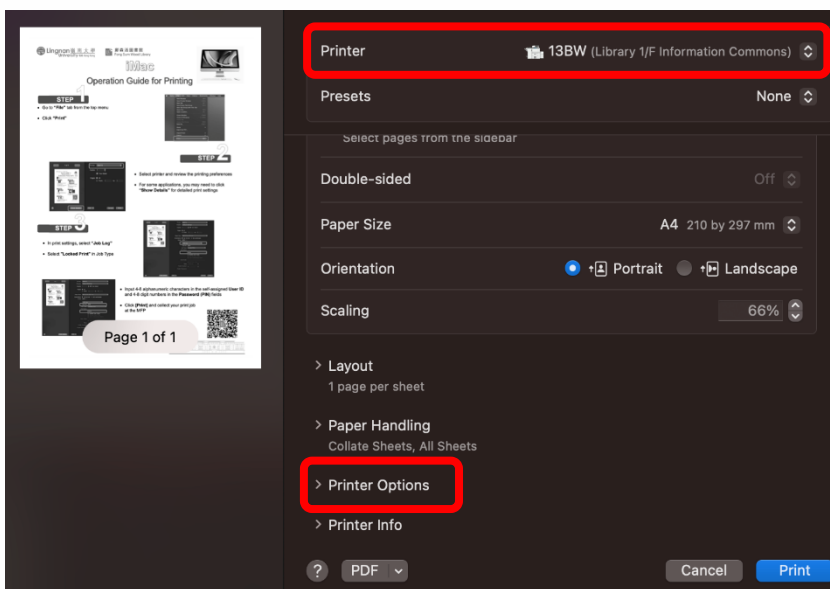
- Go to **“File”** tab from the top menu
- Click **“Print”**



2

STEP

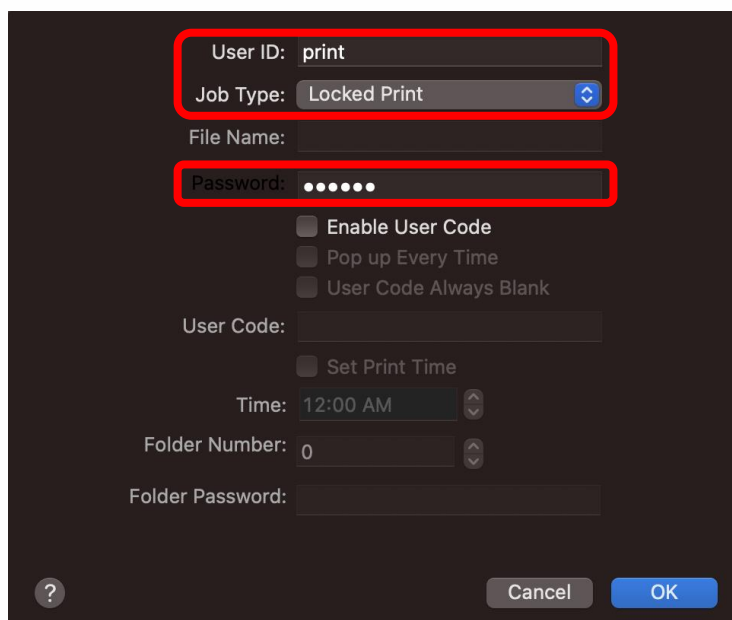
- Select printer and review the printing preferences
- For some applications, you may need to click **“Printer Options”** for detailed print settings



3

STEP

- In print options, select **“Job Log”**



- Select **“Locked Print”** in Job Type
- Input 4-8 alphanumeric characters in the self-assigned **User ID** and 4-8 digit numbers in the **Password (PIN)** fields
- Click **[Print]** and collect your print job at the MFP

