

## Wi-Fi Printing Service for MS Windows PCs and tablets

Wi-Fi printing service is available to all Lingnan Library users. If you have a MS Windows notebook computer and tablet computer, you can send your print jobs to the Library network printers via the Lingnan Wi-Fi network (SSID: LUWLAN1X or Lingnan Library).

### Where are the printers?

Two printers located in the Information Commons, Library 1/F:

- For black and white printing: Octopus B&W IC2 (Double-Sided)
- For colour printing: Octopus Colour IC1 (Single-Sided)

For the location of the Printers, please refer [Octopus Network Printers](#).

### Download the printer driver

To use this service, please download and install the printer drive before. You can download the driver at:

- Octopus B&W IC2 Windows driver
- Octopus Colour IC1 Windows driver

### OS Supported

Windows XP (32-bit)

Windows Vista (32-bit / 64-bit)

Windows 7 (32-bit / 64-bit)

Windows 8 (32-bit / 64-bit)

### Install the printer driver

Double click the downloaded printer drivers:

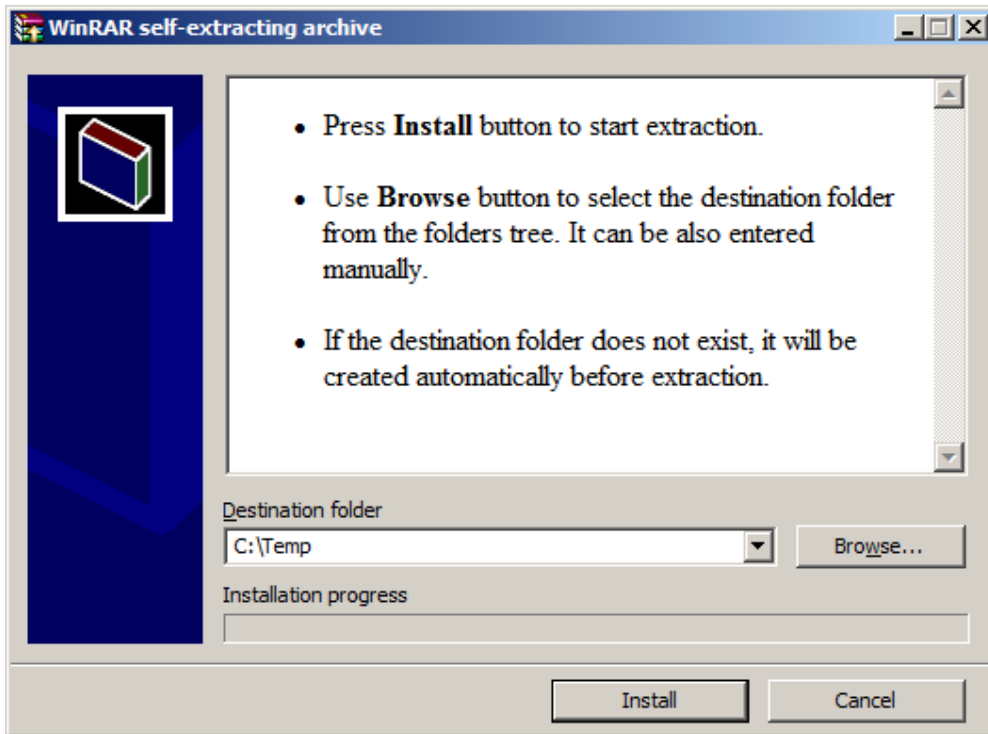


LIB\_Wireless\_Octopus\_B&W\_Printer1

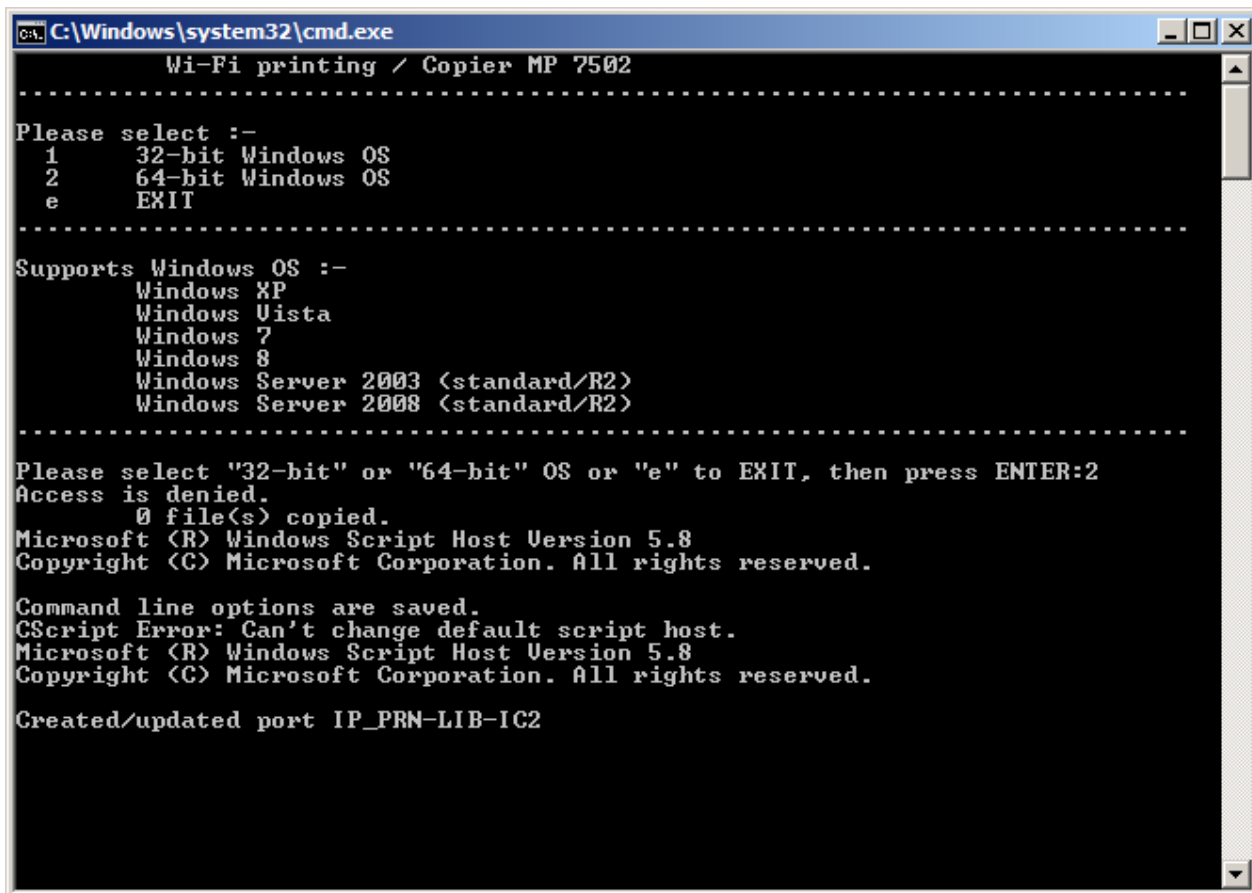


LIB\_Wireless\_Octopus\_Colour\_Printer

The following screen will be displayed:



Click "Install" to continue and select 32-bit or 64-bit printer driver version in the following screen:



After the installation, the following printers will be found in your computer:



Octopus B&W\_IC2



Octopus  
Colour\_IC1

### **How to use?**

Please refer [Printing in the Library](#) for the details.

### **Services charges**

Please refer [Octopus Network Printers](#) for the details.

### **Copyright**

Copyright laws must be observed when printing documents at the Library workstations. Users are fully responsible for any legal consequences concerning copyright which may arise. Please refer to Library's Copyright page for more details.

You can also bring your notebook computer or tablet computer to the [Integrated Helpdesk](#) at the Chiang Chen Information Commons, if further assistance on installing the Printer Driver is required.