

# iMac



## Operation Guide for First-time Users

### STEP 1

1

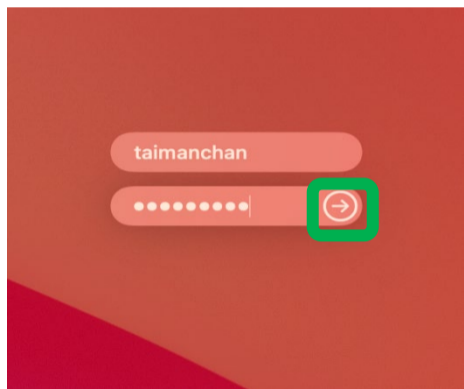
- Switch on the iMac by pressing the **Power button** near the bottom left corner at the back of the panel



### STEP 2

2

- Sign in the computer with your **Lingnan ID** and **password**
- Press **“Enter”** or click the arrow

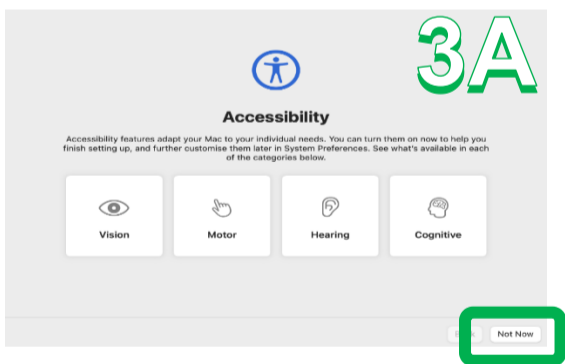


### Settings are needed for First-time Users

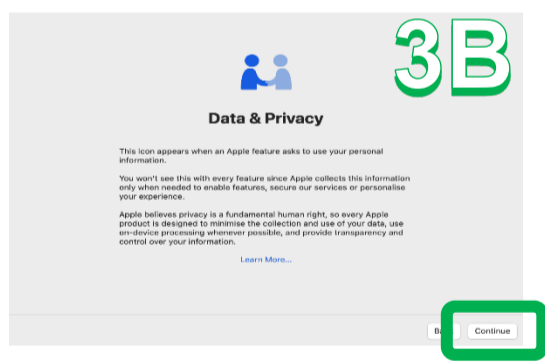
The followings are the quick steps for reference only. You may set up the profile according to your preference.

### STEP 3

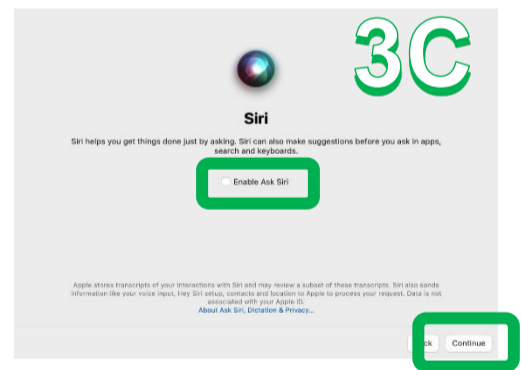
3



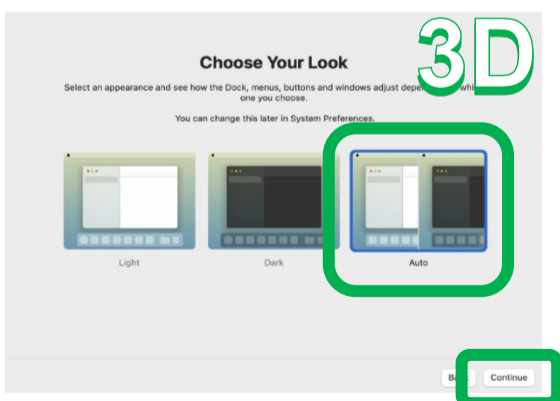
- 3A: Accessibility**
- Click **“Not Now”**



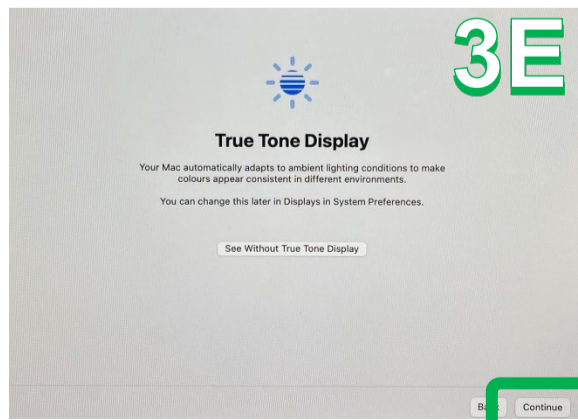
- 3B: Data & Privacy**
- Click **“Continue”**



- 3C: Siri**
- Uncheck **“Enable Ask Siri”** and click **“Continue”**



- 3D: Choose Your Look**
- Choose **“Auto”** and click **“Continue”**



- 3E: True Tone Display**
- Click **“Continue”**

